

## Square Taper/ISIS-Splined Crankset Instructions

### WARNING:

Read these instructions completely BEFORE beginning installation of this product. If you lack the knowledge or tools to perform the installation, please have your local professional bicycle mechanic perform the installation. Improper installation can result in loss of control or damage to the bicycle and/or serious injury or death to the rider. We STRONGLY recommend installation of this product be performed by a professional bicycle mechanic.

### CRANKARM INSTALLATION

1. Install the bottom bracket per the manufacturer's specifications (figures 1-2)
2. Install the crankarms

#### Square Taper:

- Apply grease to the crank bolt threads (figure 3)  
**CAUTION:** Do not apply grease to the bottom bracket's square taper spindle interface.
- Install the crankarms using the supplied crank bolts. Torque bolts 34-42 Nm (figure 4)

#### ISIS:

- Apply grease to both the crank bolt threads (figure 3) and the ISIS-splined interface (figure 5)
- Install the crankarms using the provided crank bolts. Torque bolts 34-42 Nm (figure 6)



Fig. 1



Fig. 2



Fig. 3

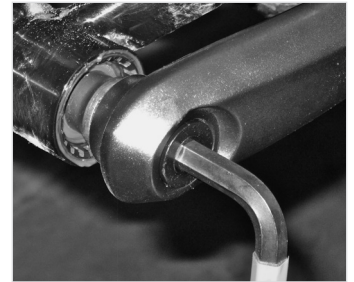


Fig. 4



Fig. 5

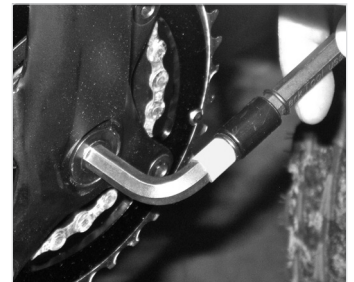


Fig. 6



Fig. 7



## **LIMITED 2-YEAR WARRANTY:**

DIMENSION® guarantees its products against manufacturer defects in materials and workmanship for a period of two (2) years from the original date of purchase, subject to the limitations below. The proof of purchase date is the one that is specified on the retail sales receipt issued by the authorized DIMENSION dealer.

**TO THE EXTENT NOT PROHIBITED BY LAW, THIS WARRANTY IS EXCLUSIVE AND THERE ARE NO OTHER EXPRESS OR IMPLIED WARRANTIES OR CONDITIONS INCLUDING WARRANTIES OR CONDITIONS OF MERCHANTABILITY AND FITNESS FOR A PARTICULAR PURPOSE.**

This warranty does not cover the following:

- Damage due to improper assembly or follow-up maintenance or lack of skill, competence or experience of the user or assembler
- Products that have been modified, neglected, used in competition or for commercial purposes, misused or abused, involved in accidents or anything other than normal use
- Damage or deterioration to the surface finish, aesthetics or appearance of the product
- Normal wear and tear
- Labor required to remove and/or refit and re-adjust the product within the bicycle assembly
- Installation of components, parts, or accessories not originally intended for or compatible with DIMENSION products as sold

This limited warranty is expressly limited to the repair or replacement of a defective product, at the option of DIMENSION, and is the sole remedy of the warranty.

This limited warranty applies only to the original purchaser of the DIMENSION product and is not transferable. This warranty applies only to DIMENSION products purchased through an authorized dealer or distributor. In no event shall DIMENSION be liable for any loss, inconvenience or damage, whether direct, incidental, consequential, or otherwise resulting from breach of any express or implied warranty or condition, of merchantability, fitness for a particular purpose, or otherwise with respect to DIMENSION products except as set forth herein. This warranty gives the consumer specific legal rights, and those rights and other rights may vary from place to place. This warranty does not affect your statutory rights.

Contact Us:  
DIMENSION®  
6400 W. 105th St.  
Bloomington, MN 55438  
855.883.6563  
dimensionbikeproducts.com